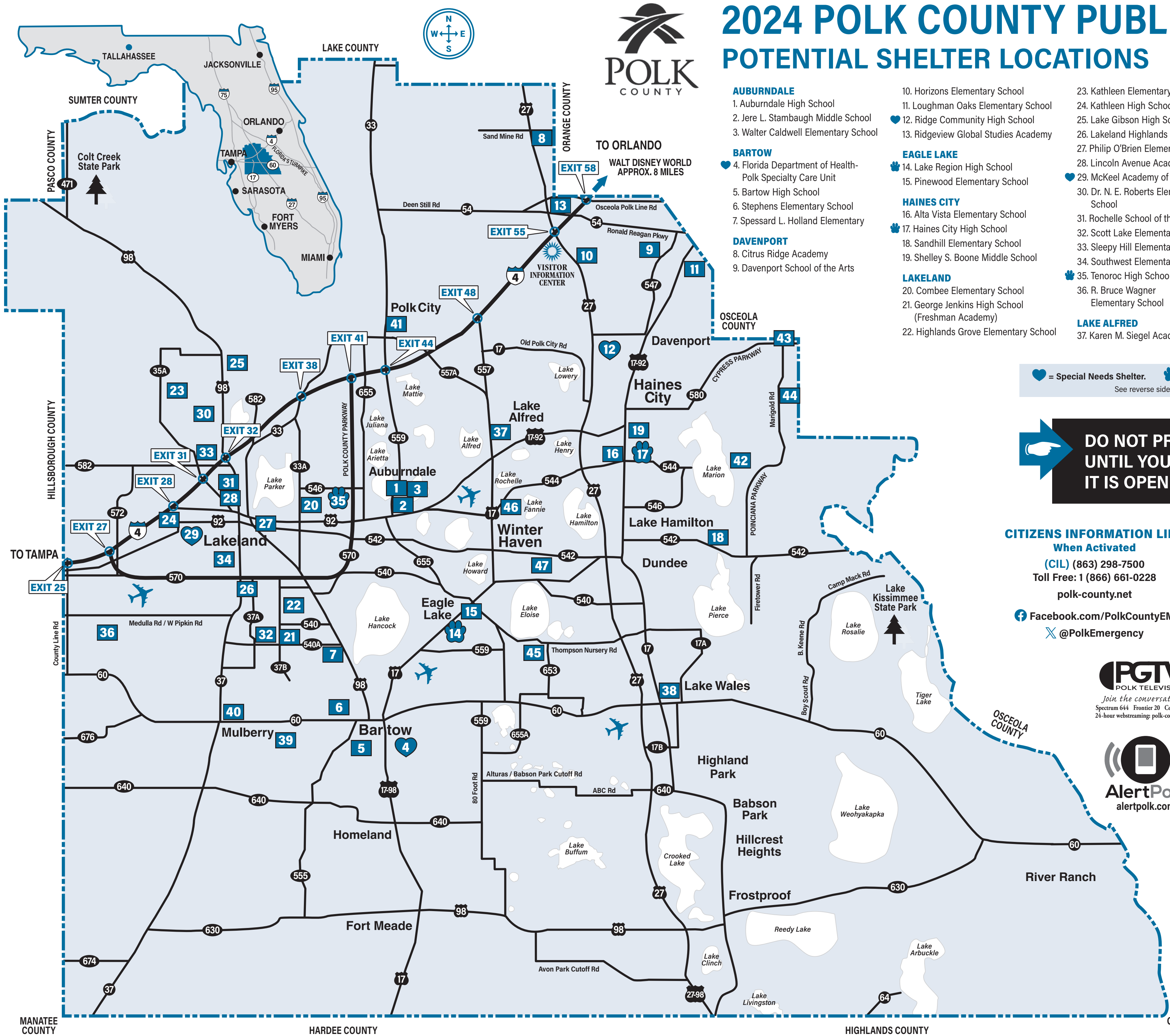




2024 POLK COUNTY PUBLIC SHELTERS POTENTIAL SHELTER LOCATIONS



- AUBURDALE**
- Auburndale High School
 - Jere L. Stambaugh Middle School
 - Walter Caldwell Elementary School
- BARTOW**
- 4. Florida Department of Health - Polk Specialty Care Unit
 - 5. Bartow High School
 - 6. Stephens Elementary School
 - 7. Spessard L. Holland Elementary
- DAVENPORT**
8. Citrus Ridge Academy
 9. Davenport School of the Arts

10. Horizons Elementary School
11. Loughman Oaks Elementary School
12. Ridge Community High School
13. Ridgeview Global Studies Academy

- EAGLE LAKE**
- 14. Lake Region High School
 - 15. Pinewood Elementary School
- HAINES CITY**
- 16. Alta Vista Elementary School
 - 17. Haines City High School
 - 18. Sandhill Elementary School
 - 19. Shelley S. Boone Middle School

- LAKELAND**
20. Combee Elementary School
 21. George Jenkins High School (Freshman Academy)
 22. Highlands Grove Elementary School

23. Kathleen Elementary School
24. Kathleen High School
25. Lake Gibson High School
26. Lakeland Highlands Middle School
27. Philip O'Brien Elementary School
28. Lincoln Avenue Academy
29. McKeel Academy of Technology School
30. Dr. N. E. Roberts Elementary School
31. Rochelle School of the Arts
32. Scott Lake Elementary School
33. Sleepy Hill Elementary School
34. Southwest Elementary School
35. Tenoroc High School
36. R. Bruce Wagner Elementary School

- LAKE WALES**
38. Spook Hill Elementary School

- MULBERRY**
39. Mulberry Middle School
 40. Purcell Elementary School

- POLK CITY**
41. Donald Bronson Community Center

- POINCIANA**
42. Lake Marion Creek Middle School
 43. Laurel Elementary School
 44. Palmetto Elementary School

- WINTER HAVEN**
45. Chain of Lakes Elementary School
 46. Jewett School of the Arts
 47. Winter Haven High School

♥ = Special Needs Shelter. 🐾 = Pet-Friendly Shelter. 📍 = Primary Shelter.
See reverse side for directions to individual shelters.

DO NOT PROCEED TO ANY SHELTER UNTIL YOU HAVE CONFIRMED THAT IT IS OPEN AND OPERATING.

CITIZENS INFORMATION LINE When Activated
(CIL) (863) 298-7500
Toll Free: 1 (866) 661-0228
polk-county.net

Facebook.com/PolkCountyEM
@PolkEmergency

- PUBLIC SHELTER POLICIES**
- All shelters are **not** automatically activated for each possible emergency. Shelters are opened as they are needed. They are not preassigned by geographic area.
 - For shelter information, monitor local radio and television or call the CIL at (863) 298-7500.
 - Prepare a 7-day disaster supply kit to take with you. A shelter won't have the comforts of home so make sure to take what you'll want or need.
 - NO PETS** (except at designated pet-friendly sites), **NO WEAPONS** and **NO ALCOHOLIC BEVERAGES** are allowed in Public Shelters.
 - For further information, call the Emergency Management office at (863) 298-7000 or visit polk-county.net.



Visit Central Florida
For accommodations, contact
1 (800) 828-7655 or (863) 420-2586
VisitCentralFlorida.org



DIRECTIONS TO POLK COUNTY PUBLIC SHELTERS

DO NOT PROCEED TO ANY SHELTER UNTIL YOU HAVE CONFIRMED THAT IT IS OPEN AND OPERATING.

AUBURNDALE

- 1 Auburndale High School**
1 Bloodhound Tr, Auburndale
From US 92, turn north on Main St; travel to Lake Ariana Blvd; turn right on Bloodhound Trl.
- 2 Jere L. Stambaugh Middle School**
226 N. Main St, Auburndale
Take Hwy 92 to Auburndale. Turn north on Main St (SR 559) through town, and the school will be on the right. From Interstate 4 follow SR 559 south into Auburndale. The school is on the left.
- 3 Walter Caldwell Elementary School**
141 Dairy Rd, Auburndale
From Hwy 92, travel north on Dairy Rd. The school is past Tanglewood Dr on the right.

BARTOW

- 4 Florida Department of Health - Polk Specialty Care Unit**
1255 Brice Blvd, Bartow
From US 17, turn east on Georgia St; clinic on the northeast corner of Georgia St and Golfview Ave (Parking and entrance on east side of building.)
- 5 Bartow High School**
1270 S. Broadway Ave, Bartow
At the intersection of US 98 and SR 60, turn south on Broadway; school is on the left (approximately 1.5 miles) on the corner of S. Broadway Ave and E. Tharp St.
- 6 Stephens Elementary School**
1350 N. Maple Ave, Bartow
From US 98, turn west on Lyle Pkwy for approximately 2 miles; turn south on Maple Ave; school is on the left.
- 7 Spessard L. Holland Elementary School**
2342 E.F. Griffin Rd, Bartow
Take US 98 from Bartow, turn left on Smith Ln. Traveling from the north take US 98 to Smith Ln and turn right.

DAVENPORT

- 8 Citrus Ridge Academy**
1775 Sand Mine Rd, Davenport
From I-4 travel north on US Hwy 27 and turn east on Sand Mine Rd; school is 1/4 mile on the right.
- 9 Davenport School of the Arts**
4751 North CR 547, Davenport
From Ronald Reagan Pkwy, travel south on N. CR 547 for 1 mile; school is on west side of N. CR 547.
- 10 Horizons Elementary School**
1700 Forest Lake Dr, Davenport
From US Hwy 27, turn east on Forest Lake Dr; school is approximately 1/2 mile on the left.
- 11 Loughman Oaks Elementary School**
4600 US Hwy 17-92 N., Davenport
Located 1 mile south of CR 54, 3 miles north of Davenport.
- 12 Ridge Community High School**
500 Orchid Dr, Davenport
From Hwy 27, turn east on Patterson Rd to Orchid Dr.
- 13 Ridgeview Global Studies Academy**
1000 Dunson Rd, Davenport
North on Hwy 27 from I-4, go 3/4 mile north to Dunson Rd. Turn east, go 1/2 mile; school is on the left.

EAGLE LAKE

- 14 Lake Region High School**
1995 Thunder Rd, Eagle Lake
From US 17, turn east on Gilbert St to Thunder Rd. (North of City of Eagle Lake.)
- 15 Pinewood Elementary School**
1400 Gilbert St, Eagle Lake
From US 17 (just south of CR 540), turn east on Gilbert St and continue to end of the road; school is on the left.

HAINES CITY

- 16 Alta Vista Elementary School**
801 Scenic Hwy S., Haines City
From US 27, turn east on SR 544 (approximately 1 1/2 miles); school is on the left.

- 17 Haines City High School**
2800 Hornet Dr, Haines City
From US 27, turn east on SR 544 to 30th St. Turn north to Hornet Dr; school is on the left.
- 18 Sandhill Elementary School**
1801 Tyner Rd, Haines City
From Dundee, turn north on SR 17 about 1.3 miles to Hatchineha Rd; turn east, go about 3 1/2 miles; school is on corner of Tyner Rd and Hatchineha Rd.
- 19 Shelley S. Boone Middle School**
225 S. 22nd St, Haines City
From US 27, turn east on US 17-92; travel to S. 22nd St; south on S. 22nd St; school is on the left.

LAKELAND

- 20 Combee Elementary School**
2805 Morgan Combee Rd, Lakeland
From US 92, turn north on Combee Rd N./CR 659; turn east onto Morgan Combee Rd; school is on the right.
- 21 George Jenkins High School Freshman Academy**
6000 Lakeland Highlands Rd, Lakeland
Take 540A to 37B (Lakeland Highlands Rd) and turn north. At first traffic light turn right at entrance to school.
- 22 Highlands Grove Elementary School**
4510 Lakeland Highlands Rd, Lakeland
From Clubhouse Rd/Hwy 540, turn north onto Lakeland Highlands Rd/Hwy 37B (south of Polk Pkwy); school is on the right.
- 23 Kathleen Elementary School**
3515 Sherertz Rd, Lakeland
From US 98 N., turn east onto Hwy 35A/Kathleen Rd; turn right onto Sherertz Rd (south of Duff Rd); school will be past Tiger Way, on the left.
- 24 Kathleen High School**
1100 Red Devil Way, Lakeland
From US 92, turn north on N. Crutchfield Rd. Turn left on Crutchfield Rd; school is on the left.
- 25 Lake Gibson High School**
7007 N. Socrum Loop Rd, Lakeland
From US 98, turn east on Marcum Rd; turn north on N. Socrum Loop Rd; school is 1/4 mile on right.
- 26 Lakeland Highlands Middle School**
740 Lake Miriam Dr, Lakeland
From SR 37, turn east on Lake Miriam Dr; school is 1/2 mile on the left.
- 27 Philip O'Brien Elementary School**
1225 E. Lime St, Lakeland
From US 98, turn north on Lake Parker Ave, then east on Lime St; school is on the right.
- 28 Lincoln Avenue Academy**
1330 N. Lincoln Ave, Lakeland
From US 92, turn north onto Lincoln Ave N.; school is on the left, past 7th St W.
- 29 McKeel Academy of Technology**
1810 W. Parker St, Lakeland
From US 92, turn south on Brunell Pkwy; turn west on W. Parker St; school is 1/4 mile on the right.
- 30 Dr. N.E. Roberts Elementary School**
6600 Green Rd, Lakeland
From US 98 N., turn west on Daughtery Rd; turn north on Green Rd; continue north approximately 1 mile; school is on the left.
- 31 Rochelle School of the Arts**
1501 Martin Luther King Jr. Ave, Lakeland
From US 92, turn north on Martin Luther King Jr. Ave; school is 1/2 mile on the right.
- 32 Scott Lake Elementary School**
1140 Hwy 540A E., Lakeland
From US 98, turn west on CR 540A; school is approximately 5 miles on the right.
- 33 Sleepy Hill Elementary School**
2285 Sleepy Hill Rd, Lakeland
From US 98 N., turn west onto Sleepy Hill Rd; school is on the right.
- 34 Southwest Elementary School**
2650 Southwest Ave, Lakeland
From SR 37, turn west on West Oak Dr; turn south on Southwest Ave; school is on the right.

- 35 Tenoroc High School**
4905 Saddle Creek Rd, Lakeland
From US 98 N., travel east for 8 miles on the Polk Pkwy. Exit onto Old Dixie Hwy. Turn west onto Old Dixie Hwy (CR 546) for approximately 2 miles; school is on the left.
- 36 R. Bruce Wagner Elementary School**
5500 Yates Rd, Lakeland
From SR 37, turn west on W. Lake Miriam Dr (becomes W. Pipkin Rd). Go approximately 3 miles to Yates Rd. Turn south on Yates Rd; school is 1/2 mile on the left.

LAKE ALFRED

- 37 Karen M. Siegel Academy**
935 Evenhouse Rd, Lake Alfred
From US 17, turn west on CR 557/Haines Blvd; turn right at N. Buena Vista Dr (also CR 557); school is 1 mile on right.

LAKE WALES

- 38 Spook Hill Elementary School**
321 Dr. J.A. Wiltshire Ave E., Lake Wales
From US 27, turn east on Central Ave; travel about 3/4 mile to CR 17 (old Alt. 27/Scenic Hwy) and turn north; travel about 3/4 mile; turn east on Dr. J.A. Wiltshire Ave (E. North Ave); school is on the left.

MULBERRY

- 39 Mulberry Middle School**
500 S.E. Martin Luther King Jr. Ave, Mulberry
From Hwy 60 travel south on S.E. 9th Ave/Martin Luther King Jr. Ave. The school is past S.E. 3rd St on the right.
- 40 Purcell Elementary School**
305 N.E. 1st Ave, Mulberry
From SR 60, turn north on SR 37 for 2 blocks; turn east on N.E. 2nd St for one block.

POLK CITY

- 41 Donald Bronson Community Center**
124 Bronson Trl, Polk City
From I-4 travel north on SR 33. Turn east on Bronson Trl; community center is on right, behind City Hall.

POINCIANA

- 42 Lake Marion Creek Middle School**
3055 Lake Marion Creek Dr, Poinciana
From Poinciana Pkwy, turn north onto Lake Marion Creek Dr; school is on the right.
- 43 Laurel Elementary School**
1851 Laurel Ave, Poinciana
From CR 580/Cypress Pkwy, turn north onto Laurel Ave; school is on the right.
- 44 Palmetto Elementary School**
315 Palmetto St, Poinciana
From Poinciana Pkwy, turn north onto Marigold Ave. Turn east on Palmetto St; school is on the left.

WINTER HAVEN

- 45 Chain of Lakes Elementary**
7001 Hwy 653, Winter Haven
From Hwy 27, turn west on Thompson Nursery Rd; school is 2 miles on the left.
- 46 Jewett School of the Arts**
2250 8th St N.E., Winter Haven
From US 17 or Hwy 544/1st St, turn east onto Ave T N.E. Turn north onto 8th St N.E.; school is at end of the road.
- 47 Winter Haven High School**
600 6th St S.E., Winter Haven
From Hwy 17 take Cypress Gardens Blvd to 6th St S.E. and turn north. The school is between Ave K S.E. and Ave G S.E., on the right.



Valid through May 31, 2025

7-DAY DISASTER SUPPLY KIT

Plan to be self-sufficient for at least seven days during and after a disaster. You should anticipate no water, electrical power or utilities for that period of time. To ensure the comfort of your family, whether at home or evacuated to another location, you should have the following items, at a minimum, assembled and readily available:

- Food (*canned goods and nonperishable*)
- Prescription medicines and first aid kit
- Infant care items
- Infant/adult diapers
- Drinking water in nonbreakable containers (*1 gallon per person per day*)
- Special dietary food, if required
- Identification, valuable papers, policies and photographs in a waterproof container
- Books, magazines, cards, toys, games
- Personal hygiene items
- Carrying container for items
- Utensils, including manual can opener, disposable tableware
- Sleeping bag, blanket, sheets and pillow
- Extra personal aids, such as eyeglasses, hearing aids, etc.
- Portable chairs
- Change of clothes
- Battery-operated items (*radio, flashlight, etc.*) with extra batteries
- Credit cards, cash and extra set of car keys
- Rainwear

Make arrangements for boarding of your pets, if possible. Pets are **NOT** allowed in any public shelters, except in the three pet-friendly shelters, where space is limited.

POLK COUNTY EVACUATION POLICY

Polk County Emergency Management recommends in-place shelter as the primary option during a disaster. For those unable to remain in place, especially those in mobile homes, the remaining choices should be considered in order of preference. Whichever of the following options you choose, be sure to have a 7-day survival kit assembled and ready (see left). Have a plan in place and execute it as soon as practical before the disaster hits. The recommended options are:

- 1. In-place Shelter** - plan to remain in residence during the emergency, if possible.
- 2. Evacuate to Friend's or Relative's Residence** - if forced to evacuate, it is less traumatic for all concerned to be sheltered with familiar people, in more comfortable surroundings.
- 3. Evacuate the Area** - other people leaving the area or areas in the projected path of the storm will also be on the road; leave at least 2 -3 days before the storm is expected to strike.
- 4. Evacuate to a Hotel/Motel** - make arrangements early as rooms will fill quickly with other evacuees.
- 5. Evacuate to a Public Shelter** - please consult the Public Shelter policy on the front of this sheet.

SPECIAL NEEDS PROGRAM

The Polk County Special Needs Program is designed to provide sheltering at Special Needs Shelters for residents with medical or physical conditions and/or dependent on medical electrical equipment who require assistance during an emergency. The Special Needs Shelters are **McKeel Academy of Technology (29), Ridge Community High School (12) and Florida Department of Health - Polk Specialty Care Unit (4).**

The program also provides transportation to public shelters and pet-friendly shelters for those unable to evacuate on their own. Pre-registration in the program for medical needs or for transportation visit polk-county.net. Contact Emergency Management (863) 298-7027.

PET-FRIENDLY SHELTERS

Pet-friendly shelters have been established at **Lake Region High School (14)**, Eagle Lake; **Haines City High School (17)**, Haines City; and **Tenoroc High School (35)**, Lakeland. Due to space limitations, the sites will be strictly pet-friendly only and will be limited to providing shelter only for dogs, cats, birds and their owners. As in any other sheltering situation, consult the local media or Citizens Information Line to ensure a specific shelter is open and operating before proceeding to that facility. Additional shelter requirements include complete shot records for each pet, which will be reviewed upon arrival at the shelter; an airline-approved carrying case, in which each animal brought to the shelter will remain for the duration of their stay; food for the pet for at least a seven-day period; and an agreement, signed by the pet owner upon registration, that confirms that the pet will be accompanied by an owner throughout the duration of the sheltering. Failure to comply with any of these items could preclude someone being able to enter the shelters.

IMPORTANT TELEPHONE NUMBERS

- Police/Fire/Medical (EMERGENCIES ONLY) 9-1-1
- Polk County Emergency Management (863) 298-7000
- Polk County Animal Services (863) 577-1762
- Polk County Sheriff's Office (863) 298-6200
- Federal Emergency Management Agency (FEMA) 1 (800) 621-FEMA
- American Red Cross (863) 294-5941
- The Salvation Army West Polk County (863) 940-9696, East Polk County (863) 291-5107
- United Way Information Referral Service 211 or (888) 370-7188

HURRICANE SEASON 2024
JUNE 1 - NOVEMBER 30
Visit polk-county.net

Is your neighborhood or organization prepared?
Get involved with CERT Community Emergency Response Teams.
Email cert@polk-county.net for more information.

SOURCES OF EMERGENCY INFORMATION

EVACUATION INFORMATION

Citizens Information Line (CIL) - When Activated (863) 298-7500
Toll Free - When Activated 1 (866) 661-0228

Radio: Primary Emergency Broadcast System Stations:
WONN 1230 AM and 1071 FM
WPCV 97.5 FM

En Español:
WIPC (*Lake Wales*) 1280 AM and 96.9 FM
WQXM (*Bartow*) 1460 AM and 99.9 FM
WTWB (*Auburndale*) 1570 AM and 92.7 FM

Television: Consult Television Listings for Local Stations
PGTV Spectrum 644, Comcast 5 and Frontier 20

WEATHER

The Weather Channel Consult Local Cable Television Listings

Local Radio/TV Stations See Above

National Weather Service weather.gov

NOAA Weather Radio S.A.M.E. Code 012105

To get emergency notifications on your phone or by email, register at alertpolk.com. These notices inform county residents about public safety threats and concerns. (Standard messaging rates may apply.)